

Southern Highlights of Malawi

Beach, bush and beautiful tea plantations in Southern Malawi



Day 1: Arrive Blantyre (Huntingdon House)

You will be met on arrival in Blantyre and transferred to Huntingdon House for two nights on fully-inclusive basis.

The next two days are at leisure to explore Satemwa Estate and surrounding tea plantations from your base at Huntingdon House.

Huntingdon House

Situated in the Shire Highlands, about one hours' drive from Blantyre and within easy reach of Lake Malawi's southern shore, Huntingdon House is a charming colonial-era country home dating back to 1928.

Huntingdon House, and the Satemwa Estate to which it belongs, has been in the Cathcart Kay family for generations, with the family's fourth-generation descendants still managing the tea and coffee production of the estate to this day.

The house was substantially refurbished in 2009 and converted into a 5-room guesthouse (accommodating up to 12), but it still retains much of its original charm and style, with its wrap-around verandah, silver service dining room, and grand lounge with wooden fireplace redolent of an earlier era.

Your Financial Protection

All monies paid by you for the air holiday package shown [or flights if appropriate] are ATOL protected by the Civil Aviation Authority. Our ATOL number is ATOL 3145.

For more information see our booking terms and conditions.

Huntingdon House is a wonderful place to relax, surrounded by verdant gardens with quiet patios and terraces just waiting to be explored. It's perfect for cooling off at the end of your holiday, the cool climate and beautiful highland scenery particularly refreshing after a hot and dusty safari!

There are lovely walks to be had around the estate and the surrounding highlands, and guests at Huntingdon have free use of mountain bikes to explore. Guided tours of the tea and coffee estate can be arranged, including tastings.

The house offers dramatic views of Mount Mulanje and the Lower Shire Valley to the west.

Each of Huntingdon's five suites is uniquely styled and furnished, and all take after their function in the original house - the Nursery, for instance, has been converted into a family room with two single beds and one double, and French doors that open onto the patio. The old Chapel and priest's quarters, a separate annex to the main house, have been converted into a superb honeymoon suite, with high beamed ceiling and private patio.

All rooms are furnished in a lavish fashion with dark wood furnishings and canopy beds. Bathrooms feature clawfoot bathtubs and separate showers.



Day 2: Satemwa Estate (Huntingdon House)

Today is at leisure at Huntingdon House. Tea and coffee tasting is included in your stay. Other activities available locally include mountain biking and guided walks. Alternatively, feel free to relax and explore the extent estate grounds at your own leisure.

Days 3-4: Majete Game Reserve (Mkulumadzi Lodge)

Depart Huntingdon House after breakfast for Majete Game Reserve (approx. 1.5 hours' drive).

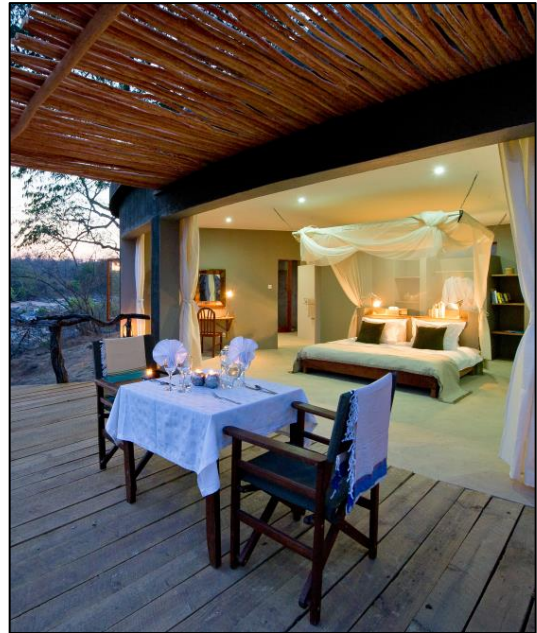
Check-in at Mkulumadzi Lodge, in north-east Majete, for two nights (full-board basis).

Mkulumadzi Lodge

Mkulumadzi Lodge is situated within a private concession of the Majete Wildlife Reserve, Malawi's sole big five game park. Opened in 2011, it is one of only two properties within the park.

Managed by the well-established luxury safari operator, Robin Pope Safaris, Mkulumadzi offers a standard of accommodation not previously available in Majete. Guests are accommodated in fabulous chalets, with king-size beds, spacious lounge areas and private viewing decks overlooking the Shire River. Facilities include a swimming pool with sun loungers, indoor and outdoor dining, and a bar and lounge.

Mkulumadzi's location, at the confluence of the Shire and Mkulumadzi Rivers, allows for access to the core game-viewing territories at the heart of Majete Reserve, as well as its own 17,000 acre private concession, ensuring excellent game-viewing opportunities.



Mkulumadzi Lodge has just eight guest chalets, of which two are family units, meaning the lodge accommodates no more than 20 guests at a time.

The tented chalets open fully at the front in order to allow in lots of natural light. Inside they are furnished with king-size beds - positioned facing the open front of the tents - and a separate seating area with low table and chairs. Each chalet opens onto a shaded viewing deck overlooking the Shire River.

Mkulumadzi has the style and character of a remote bush camp but the amenities of a comfortable lodge. The chalets are equipped with low-power air-con units, mini-bars and tea/coffee making facilities, and generous en-suite bathrooms with twin basins, sunken baths and separate showers.

Meals are typically served communally around a shared dining table though private dining can be arranged on request.



Breakfast is a generous buffet of cereals, fruits and pastries, with cooked breakfast available to order. Lunch is a light buffet of mostly cold dishes and salads, or alternatively a picnic lunch provided during game activities. Dinner is a 3-course set menu. The food is to a very high standard, in keeping with the best luxury camps in Malawi.

The lodge has a swimming pool, bar and lounge, indoor and outdoor dining and gift shop.

Activities at Mkulumadzi include 4x4 game drives, walking safaris and boat safaris on the Shire river (dependent on water levels).

After lunch at the lodge, embark on an afternoon game drive in Majete Game Reserve.



Majete Game Reserve

For a long time neglected and crippled by poaching, Majete Wildlife Reserve came under new management in 2003 and has since undergone a real rebirth. Over 2,000 animals have been reintroduced to the Reserve, including elephant, black rhino, buffalo, zebra, sable antelope, eland, waterbuck, nyala, hartebeest, kudu and many more, making this one of the most densely populated safari reserves in all of Malawi.

Visitors to Majete have the option to explore the reserve by vehicle – game drives in open vehicles – or on foot. Guided bushwalks are a special highlight. You will be led by experienced scouts, who themselves cover the Reserve every day on patrols and are thus best equipped to tell you all about Majete. For the more adventurous there is the option to track elephant on foot – a once in a lifetime experience! Together with two scouts, you will search for elephants using a radio transmitter. Once there is a signal you will go on foot into the bush. It is important to be downwind and very quiet – the elephants are wild animals and can be dangerous, but it is a truly impressive experience to be standing just a few metres away from these majestic animals.

Days 5-6: Liwonde National Park (Kuthengo Camp)

Depart Mkulumadzi this morning and transfer approx. 4 hours to Kuthengo Camp, in Liwonde National Park, where you stay two nights (fully-inclusive basis).

Kuthengo Camp

Located in the north of Liwonde National Park, Kuthengo means “in the bush” in the local language - a most fitting name! This is very much a classic safari camp. It's small, intimate and eco-friendly, with the main energy source being solar power (and a back-up generator if necessary).

This camp is the latest addition to long-established Robin Pope portfolio of safari camps and lodges, so guests can expect immaculate service, highly qualified guides and fabulous food.

Days are spent on game drives in open-top 4x4s. Walking and boat safaris are also on offer, allowing for river-based game-viewing, with common sightings including hippo and crocodile, and the frequent spectacle of fish eagles and kingfishers swooping to the water. Also commonly sighted on the river's edge are Liwonde's large elephant herds.



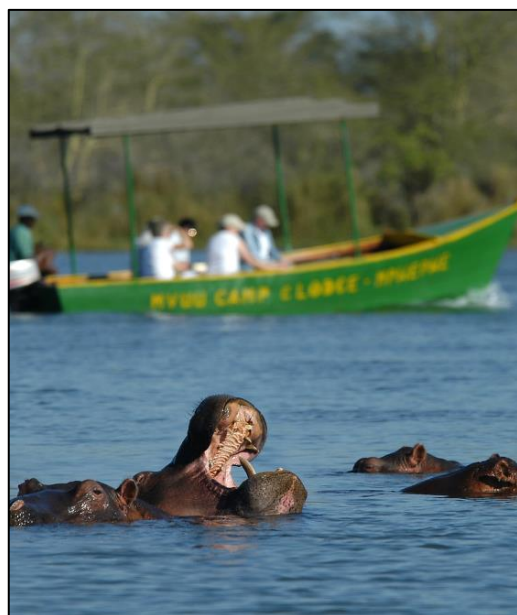
Kuthengo Camp offers just 4 cosy safari tents. The canvas tents are generously-sized, featuring either twin or double beds draped in mosquito nets, and en suite bathrooms with outdoor showers. There is also a larger family tent available. All tents feature inside seating areas and open onto a verandah with lounge chairs overlooking the river.

The tents are airy with a large opening facing the riverfront; however, should you need it there is an eco-friendly air-conditioning system that cools only within the mosquito net, rather than the whole tent.

Liwonde National Park

Liwonde is located in the southern half of Malawi on the Shire River, allowing for both game drives on the plains and river boat safaris. The park landscape is very diverse, incorporating picturesque lagoons and marshland, swamps, and forests dominated by mopane woodland, acacia and handsome baobabs.

Liwonde is the most popular and wildlife-rich of Malawi's safari parks. It doesn't offer a big game-viewing experience to rival that of the Serengeti or Masai Mara, but the park has a wonderfully relaxed feel and some stunning landscapes. The birdlife is the great attraction here, as in most parks in Malawi, and among the species to be found are African fish eagle, weavers, bee-eaters and Pel's fishing owl to name but a few. Botanists will also find the park very interesting, with over 1,000 species of plants, including beautiful seasonal wild flowers.



As for big game, the Shire River is home to large pods of noisy hippo (around 2,000 of them!) and crocodile – the night time sounds here are amazing (you can also add frogs to the chorus!) The park's numerous other residents include waterbuck, bushbuck, plentiful elephant, impala, warthog, greater kudu, vervet monkey, baboon, monitor lizards, sable antelope, zebra, hyena and the endangered black rhino. African Parks have been successful in reintroducing cheetah to the park and increasing the number of elephants. They have big plans to continue their conservation work within the park.



Days 7-8: Liwonde National Park (Mvuu Tented Lodge)

Breakfast at Kuthengo followed by a short drive to meet your driver/guide from Mvuu Tented Lodge. Game drive en route to Mvuu, in western Liwonde, where you stay the next two nights (fully-inclusive basis).

Mvuu Lodge

Mvuu Lodge has a lovely location on the banks of the Shire River in Liwonde National Park. With just 8 chalets, it offers a relaxed setting for a safari in one of Africa's less-visited wildernesses.

Activities at Mvuu revolve around boating trips on the Shire River and 4x4 game drives, with a special focus on black rhino tracking. Nature walks are also possible. Birding enthusiasts will be able to participate in non-stop birding around Mvuu, the birdlife being as varied as it is prolific – the Shire River is a favourite haunt for the African fish eagle, Pel's fishing owl, Böhm's bee-eater and white-backed night heron.

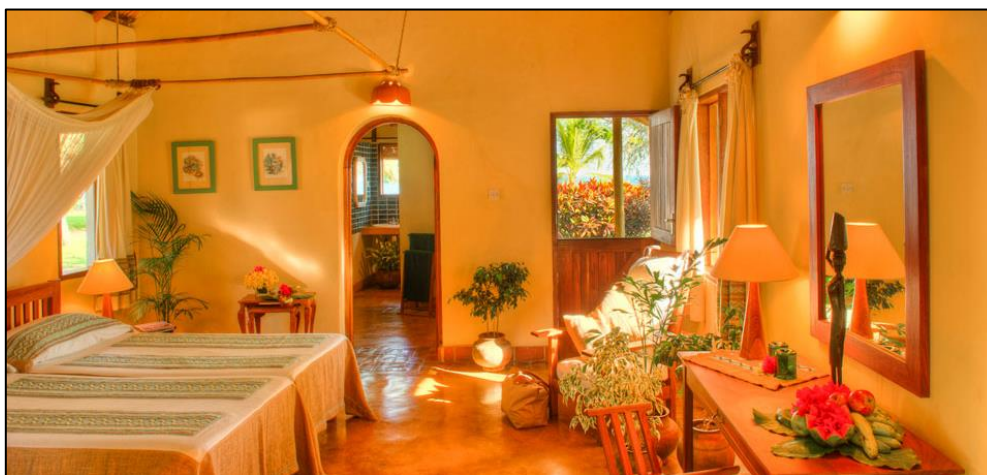


Mvuu's airy thatched lounge and bar looks out onto the Shire River. There is also a boma where you can enjoy an evening drink, and a small swimming pool with deck chairs in which to relax between safari activities.

Mvuu Lodge offers eight safari chalets. Positioned on raised decks, the canvas and thatch chalets are rustic in design, but with spacious interiors. They have hammocks and wicker seating on the verandah overlooking the lagoon. Each tent has an en suite bathroom.

Days 9-11: Lake Malawi (Makokola Retreat)

Depart Mvuu after breakfast and transfer approx. 2 hours to the southern shores of Lake Malawi for three nights at Makokola Retreat in a superior sea view room (fully-inclusive basis).



Makokola Retreat

Makokola Retreat is an upmarket beach resort situated on the southern shore of Lake Malawi, within the boundaries of the national park. A substantial resort, it boasts a wealth of facilities, including a nine-hole golf course, fabulous 44-metre swimming pool, and fully-equipped spa, all situated within private gardens and overlooking a long stretch of white sand beach.

Makokola Retreat offers 48 rooms and suites, set within private villas situated a few steps from the beach. The standard beach rooms feature king-size beds furnished with Malawian cottons, en-suite bathrooms with separate bath and shower, and private verandahs overlooking the lake.



The restaurant at Makokola serves a mix of Malawian favourites and more familiar international fare, prepared with ingredients grown in the hotel gardens or sourced locally.

There's also a lively bar, which wraps around the pool and overlooks the lake and beach.

The next three days are free for you to enjoy the beach and the facilities at Makokola Retreat. Various lake activities, including water sports and diving, can be arranged locally.

Days 12-14: Lake Malawi (Mumbo Island Camp)

This morning you will have a 2-hour driven transfer followed by a 1-hour boat transfer to Mumbo Island Camp, where you stay 3 nights (full board basis).

Mumbo Island Camp

Mumbo is a beautiful eco-camp situated on an uninhabited island within Lake Malawi National Park.



Mumbo is decidedly rustic; the island is a tiny 1km wide and has no electricity – lighting is instead by paraffin lamps, and the water is solar heated. Accommodation is in simple reed-and-thatch chalets, each with its own porch and hammock with lake views.

This is a wonderful camp at which to unwind and relax. Those who enjoy a more active beach break will also find plenty of ways to keep themselves occupied at Mumbo. The lake is crystal clear, and shoals of colourful fish can be found offshore – the lack of motor boats make this region perfect for snorkelling and kayaking. Birding is varied here, and the island has some marked trails for walkers.

During your stay at Mumbo you are free for you to do as much or as little as you wish. Mumbo Island Camp offers several activities, including snorkelling and kayaking on the lake to see Malawian cichlids, sundowner cruises, and walking on the island. Scuba diving can also be arranged locally.

Day 15: Departure, via Lilongwe

Depart Mumbo after breakfast and journey back across the lake, then transfer by road to Lilongwe Airport to connect with your homeward flight.

Please see price guide on next page.

Price Guide:

Low season (Jan-Jun; Nov): From £4,360 per person sharing

High season (Jul-Oct): From £5,065 per person sharing

Prices based on two travellers in shared twin/double accommodation and subject to availability at the time of booking. For more information, or if you would like to enquire about a tailor-made holiday combining part or all of the above itinerary, please [contact us](#).

Includes:

- All accommodation as specified
- Fully inclusive to include local drinks (except Mumbo Island which is full board)
- All game viewing activities as per itinerary
- National Park fees
- Non-motorised water sports at Makokola and Mumbo
- Private transfers

Excludes:

- International air fares (from £700, incl. taxes)
- Travel insurance – please ask us for a quote
- Imported drinks
- Motorised water sports at Mumbo Island Camp
- Items of a personal nature
- Visas if required